

 **samet**

sliding
DOOR SYSTEMS



NEW

SMT 500

Upper Mounted Sliding Door System

- Easily assembly and disassembly opportunity
- 50 kg carrying capacity
- Long life and silent functioning
- Adjustable and nonadjustable alternatives
- 7 mm adjustment
- Suitable for cover thickness up to 22 mm
- Left and right usage soft close mechanisms
- High quality bearing wheels



Packaging

Product upper set and product lower set sells seperately.

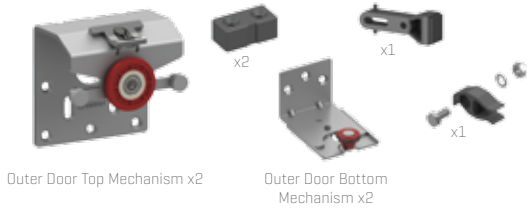
- 1 set inner and 1 set outer mechanism for 1 cabinet.
- Soft-close mechanism is not include in set.
- There are 12 sets in 1 package.



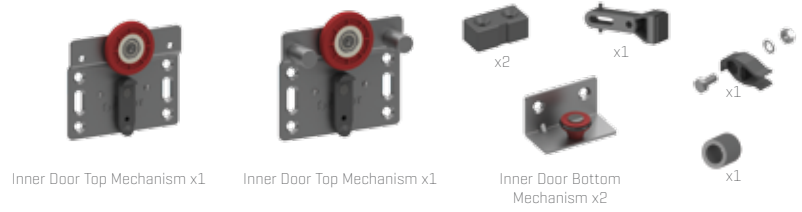
SMT 500

Standard Set Includes

Outer Door Mechanism



Inner Door Mechanism



Aluminium Upper and Lower Rails



SMT500 Upper Hanger Rail
1280185811250 - 1280185811300



SMT500 Lower Rail
1280185821250 - 1280185821300

Optional



Mechanisms

DESCRIPTION	CODE	UNIT
SMT 500 Non-Adjustable Upper Mounted Rear Door Mechanism	12800952	Set
SMT 500 Upper Mounted Front Door Mechanism	12800953	Set
SMT 500 Soft-Close Mechanism	1280111	Set

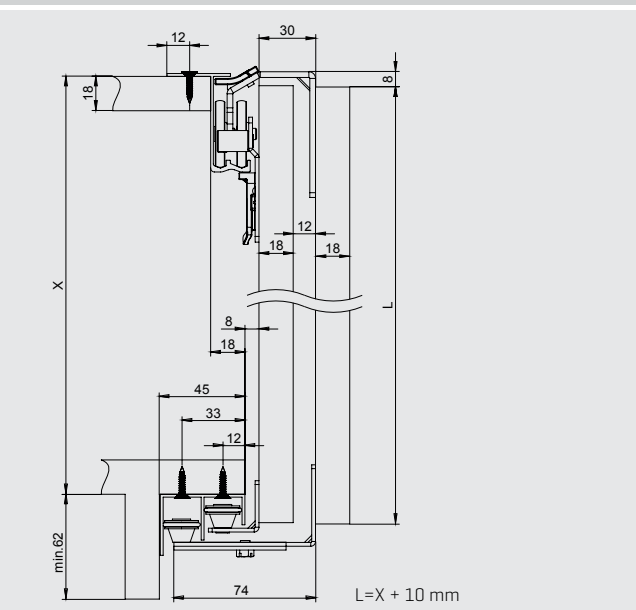
Upper Rails

DESCRIPTION	CODE	LENGTH
SMT500 Upper Hanger Rail	1280185811250	2500 mm
SMT500 Upper Hanger Rail	1280185811300	3000 mm

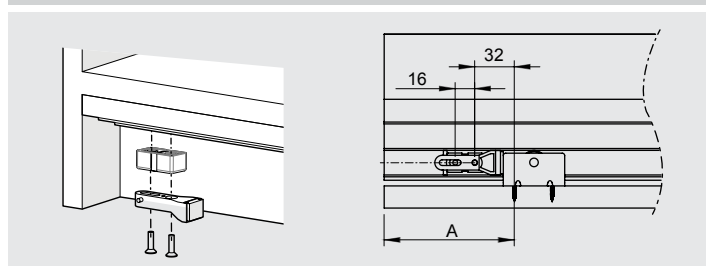
Lower Rails

DESCRIPTION	CODE	LENGTH
SMT500 Lower Rail	1280185821250	2500 mm
SMT500 Lower Rail	1280185821300	3000 mm

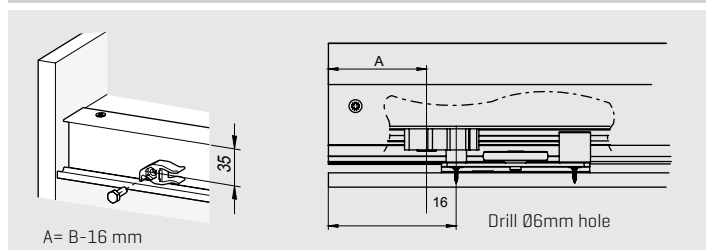
Space Requirement in Cabinet



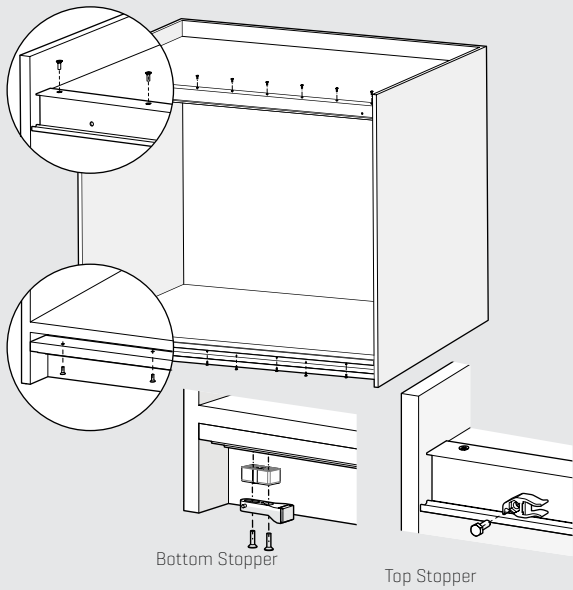
Bottom Stopper Assembly



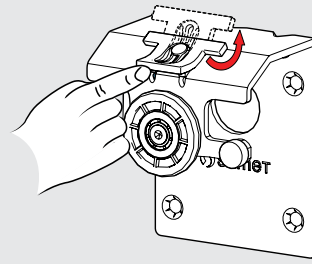
Top Stopper Assembly



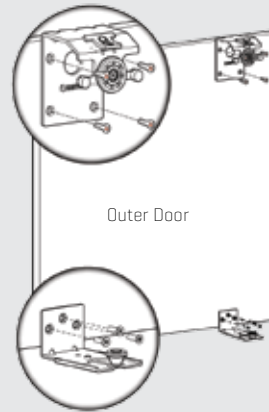
Top and Bottom Rail Assembly



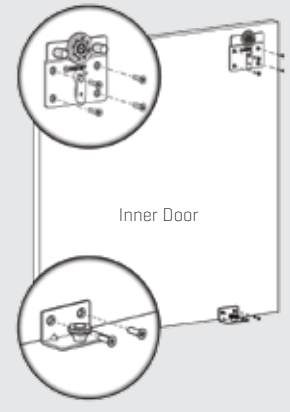
Mechanisms in Door Installation and Adjustment



Before assembly of upper mechanism, please push locking latch as shown.

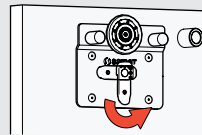
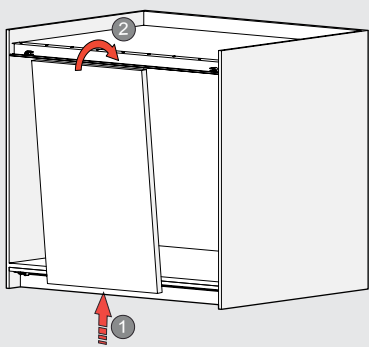


Outer Door

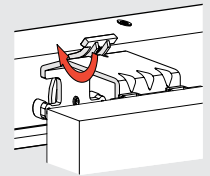
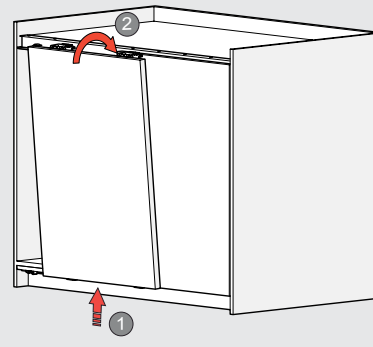


Inner Door

Assembly of Doors

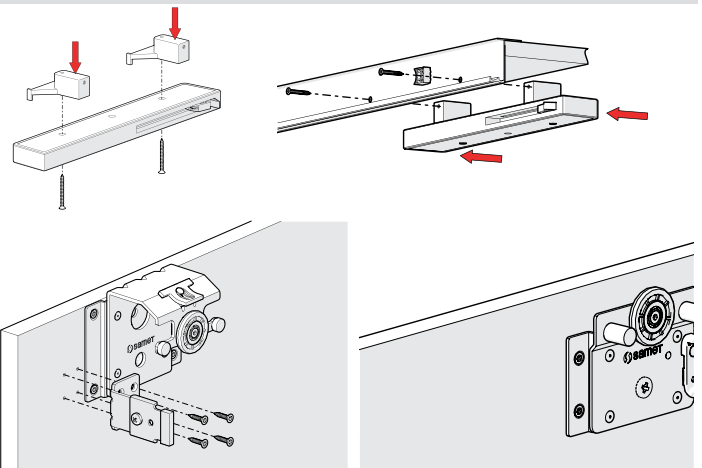
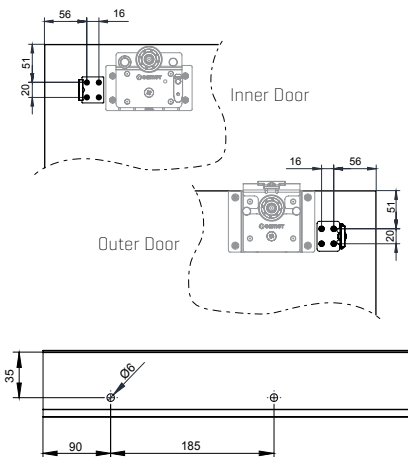


After inserting inner door, please rotate locking latch and fasten the door. Assemble the gauge plastic to pin which is inside of the mechanism



After inserting outer door please rotate locking latch and fasten the door.

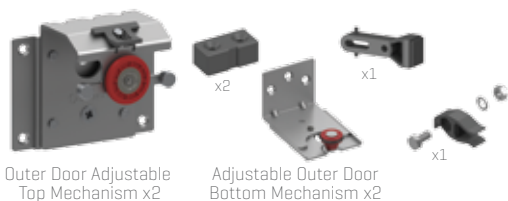
Soft-Close Mechanism Assembly



SMT 500 Adjustable

Standard Set Includes

Outer Door Mechanism



Inner Door Mechanism



Aluminium Upper and Lower Rails



SMT500 Upper Hanger Rail
1280185811250 - 1280185811300



SMT500 Lower Rail
1280185821250 - 1280185821300

Optional



Mechanisms

DESCRIPTION	CODE	UNIT
SMT 500 Adjustable Upper Mounted Rear Door Mechanism	12800950	Set
SMT 500 Adjustable Upper Mounted Front Door Mechanism	12800951	Set
SMT 500 Airbrake Soft-Close Mechanism	1280111	Set

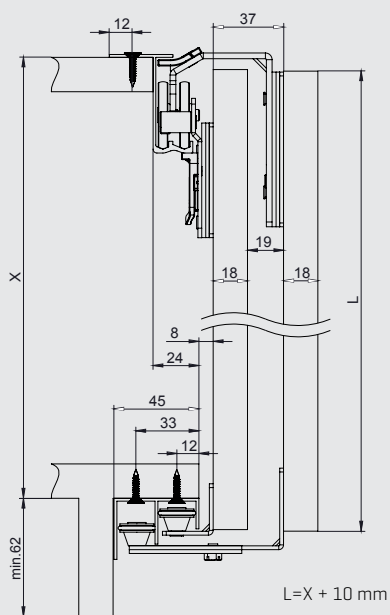
Upper Rails

DESCRIPTION	CODE	LENGTH
SMT500 Upper Hanger Rail	1280185811250	2500 mm
SMT500 Upper Hanger Rail	1280185811300	3000 mm

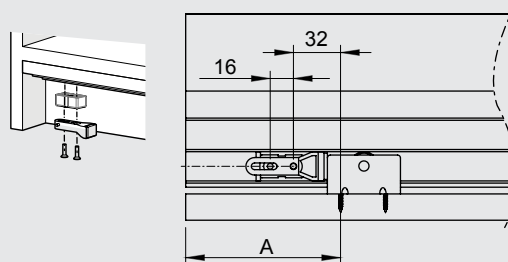
Lower Rails

DESCRIPTION	CODE	LENGTH
SMT500 Lower Rail	1280185821250	2500 mm
SMT500 Lower Rail	1280185821300	3000 mm

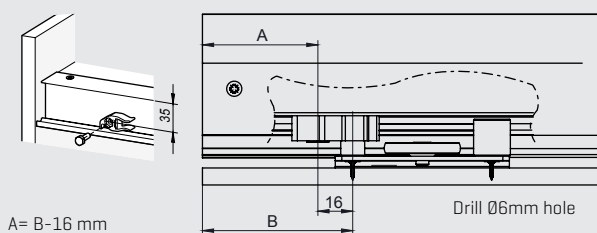
Space Requirement in Cabinet



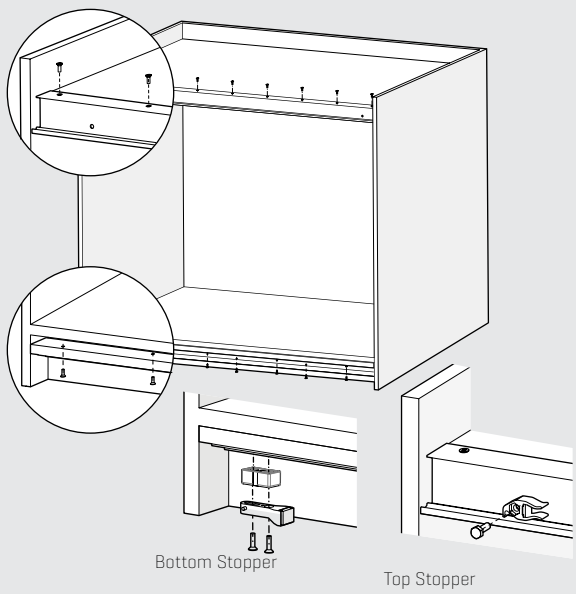
Bottom Stopper Assembly



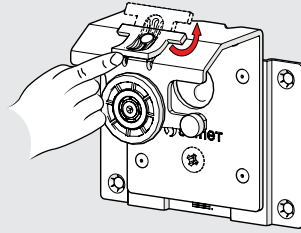
Top Stopper Assembly



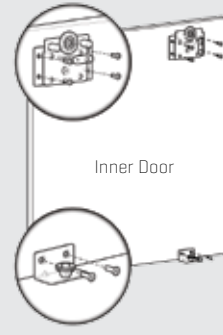
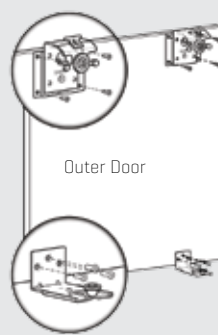
Top and Bottom Rail Assembly



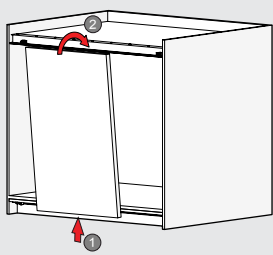
Mechanisms in Door Installation and Adjustment



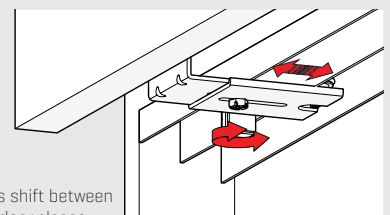
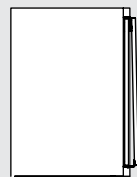
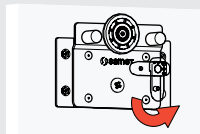
Before assembly of upper mechanism, please push locking latch as shown.



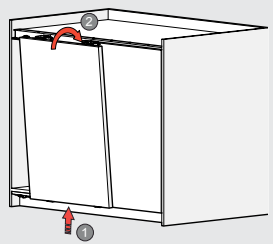
Assembly of Doors



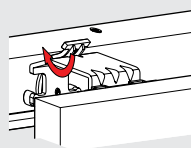
After inserting inner door, please rotate locking latch and fasten the door.



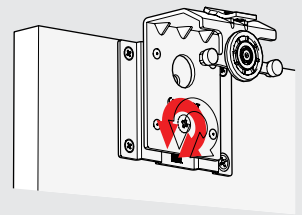
If there is an axis shift between cabinet and the door, please adjust from adjusting screw



After inserting outer door, please rotate locking latch and fasten the door.



If there is an axis shift between cabinet and the door, please adjust from adjusting screw



Soft-Close Mechanism Assembly

